

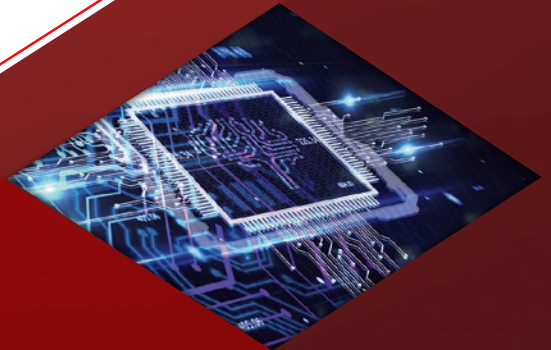


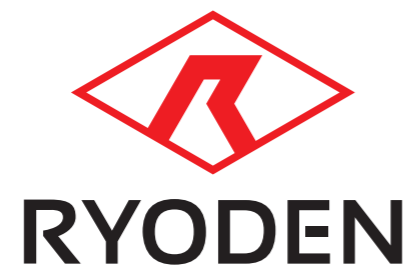
Be a 未来 - Creator as Your Partner



**RYODEN**

Company Profile





For 75 years, Ryoden Corporation has done business as a technical trading company. In Japan, we have long operated under the name Ryoden Shoji Kabushiki Kaisha (“Ryoden Trading Company”). Now, building on the knowledge, experience, and technical prowess we have developed over the decades, we are reinventing ourselves under a new Japanese name: Kabushiki Kaisha Ryoden. Our goal: to become a business creation company that transcends the bounds of an agency or trading company. Ryoden has embarked on a new adventure. Giving shape to excitement by bringing people and technology together.



April 1, 2023,  
marked the birth of the new **RYODEN** .

## CONTENTS

3	❖ Message from the President
4	❖ The Ryoden Commitment
6	❖ Ryoden's Strengths
8	❖ Ryoden's Businesses
10	❖ Ryoden's Solutions
14	❖ Management Philosophy and Guidelines for Action
15	❖ Purpose and Values
16	❖ The Ryoden Network
18	❖ Corporate Profile

## ❖ Message

Does a trading company serve any purpose? If all it does is buy and sell things, then the answer is clearly no.

That's why, as Ryoden approaches its centenary, we're aiming to move into territory that's not just an extension of our existing business.

Rather than simply solving problems, for example, we start by unearthing potential issues facing clients and society. Having identified an issue, we conceptualize what viewpoint we should adopt to it at Ryoden. Then, by applying the expertise we've built up as a trading company, we devise an innovation that could change the future in previously unimagined ways. Finally, we launch the innovative idea by actually implementing it.

Here at Ryoden, we refer to these stages as the Four H's after the initial letter of the four operative words in Japanese: hakkutsu (unearthing), hasso (conceptualizing), hatsuan (devising), and hasshin (launching). By implementing the Four H's, we engage in business creation on behalf of society and clients. At the same time, we're contributing to building a sustainable society by taking action on the environment, security, and safety. These are the hallmarks of the new Ryoden.

Feel free to call us Ryoden as you always have. But we've changed in a big way. Now we're creating the future alongside you, with innovations that are truly first of their kind.

That's why Ryoden is the right choice.



President and CEO

*Katsuyuki Tomizawa*

# The Ryoden Commitment

By constantly creating new value as a business creation company that transcends the bounds of an agency or trading company, Ryoden has always lived up to the expectations of clients and society. Moving forward, we will create new business by engaging in dialog with our clients, our partners, and markets worldwide. And we will contribute to building a sustainable society by taking action on the environment, security, and safety.



## Building a Sustainable Society by Acting on the Environment, Security, and Safety

### ❖ Action on the SDGs

The Ryoden Group has identified the following seven Sustainable Development Goals (SDGs) as business priorities where we can contribute to solving the problems facing society. In addition, we are committed to helping advance the other SDGs across all aspects of our operations.



### ❖ Action on the Environment

Here at Ryoden, we consider action on the environment to be a key aspect of corporate social responsibility. In December 2001, we achieved ISO 14001 certification. We are currently pursuing several policies on the environment: working to achieve a zero-carbon society and a circular economy, strengthening globalization initiatives, and implementing CSR programs that protect biodiversity.

<b>Zero-carbon society</b> Achieving a zero-carbon society <ul style="list-style-type: none"> <li>• GHG emission cuts</li> <li>• Total carbon management</li> </ul>	<b>Globalization</b> Globalization initiatives <ul style="list-style-type: none"> <li>• Rigorous management of chemicals in products</li> </ul>
<b>Biodiversity</b> CSR programs that protect biodiversity	<b>Circular economy</b> Achieving a circular economy <ul style="list-style-type: none"> <li>• Strengthening the 3 R's by eliminating waste</li> <li>• Use of sustainable forest paper</li> </ul>

### The Ryoden Group's Environmental Vision

By 2030, the Ryoden Group will set society on the path to a sustainable future by doing business in an eco-friendly manner, so that we can bequeath our planet intact to posterity.

#### We will redouble our efforts to transition from a low-carbon society to a zero-carbon society by

- rising to the challenge of eliminating greenhouse-gas emissions from power use; and
- providing solutions like zero-energy buildings that reduce environmental impacts.

#### We will boost environmental value by crafting environmental solutions that instill a product lifecycle mindset.

# Ryoden's Strengths

## Business Strategy

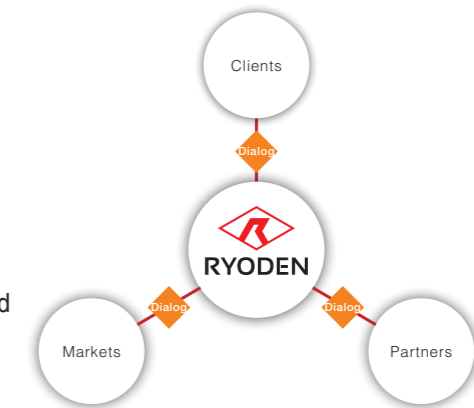
Innovation  
Branding  
Solution  
Marketing  
Analysis  
Ideas  
Success  
Management

## Technology

Innovation  
System

## Ryoden's Three Strengths as a Business Creator with a Global Presence

Over our long history since 1947, we have developed three strengths: our technological prowess, our global network, and our extensive range of business domains. By fully harnessing these strengths in Japan and worldwide, we foster closer coordination between our clients and our partners. We are thus able to recommend and implement the best solution or system for each client's needs.



01

### Technological Prowess



The technological prowess to deliver solutions that are one step ahead

Ryoden delivers optimized solutions that are one step ahead. By leveraging our impressive technical expertise, we painstakingly identify the real challenges facing our clients. We also analyze and forecast technological trends in the market. Moreover, our professionals stationed in Japan, East Asia, Southeast Asia, and other regions know how to combine the various technologies available from our partners into an integrated package. We are always ready to provide support with developing software and embedded systems that will enable clients to make a better product. We also suggest ways to achieve higher productivity.

02

### A Global Network



Catering to Clients' Needs as a Global Company with a Local Focus

Since setting up a local affiliate in Singapore in 1990, Ryoden has established overseas offices in Asia, Europe, and the United States. We have thus built a network of locations right there on the spot ready to meet the varying needs of clients who have expanded onto the global stage. Currently we have 29 locations in Japan and 21 elsewhere. These provide clients with global information, products, and services. Building on our track record in Japan, and the trust it has earned us, Ryoden will continue to operate as a global company with a local focus.

03

### Extensive Range of Business Domains



Delivering the Best Solution by Leveraging Our Wide-ranging Expertise

Four core businesses have driven Ryoden's growth since our inception in 1947: factory automation systems, cooling and heating systems, building systems, and electronics. As the possibilities for leveraging information technology and artificial intelligence are explored in various sectors, we have also expanded into two new fields: smart agriculture and healthcare. By drawing on the technical expertise and knowledge we have built up in these many different fields, we come up with the solution best designed to solve each client's issues.

# Ryoden's Businesses

## Contributing to the Environment and Safety in 4 Core and 2 Growth Businesses

Ryoden's four core businesses are factory automation systems, cooling and heating systems, building systems, and electronics. We also have two growth businesses, as we call them: smart agriculture and healthcare. Through our operations in these varied fields, we contribute to protecting the global environment and building a safe, secure society.



### ❖ Four Core Businesses

#### Factory Automation Systems

Whether you seek to streamline operations on the production floor or improve QCD, Ryoden serves all your factory needs with an extensive lineup that only a Mitsubishi Electric dealer can offer. Our offerings range from factory automation controllers and drive units to numerically controlled machine tools and robots to machining equipment.



#### Cooling & Heating Systems

Ryoden supplies industrial cooling and heating systems tailored to the client's exact needs. These include air conditioning systems for office buildings, as well as clean rooms and energy-saving support systems. Our systems can be tailored to any worksite, whether the office, production and machining facilities, testing rooms and laboratories, or distribution, storage, and shipping facilities.



#### Building Systems

Ryoden recommends and installs building management systems designed to create a safe, comfortable environment. These are comprehensive, embracing everything from elevators, escalators, and other building equipment to the latest security and remote monitoring systems.



#### Electronics

Customer requirements for semiconductors and electronic devices are growing ever more sophisticated. Ryoden not only supplies products optimized to the client's needs. We also offer a wide range of solutions, including consulting services that share our technical expertise.



### ❖ Two Growth Businesses

#### Smart Agriculture

Ryoden designs and constructs plant factory systems while applying the knowledge and expertise we have built up in our core businesses. We contribute to sustainable agriculture and food production by developing and commercializing highly efficient next-generation plant factory systems.



#### Healthcare

Ryoden offers image data management and operational support systems designed to enable healthcare facilities to make reliable use of 3D and AI-based diagnostic imaging equipment. We also support preventive medicine and assist companies with workplace wellness programs.



### Case Study of Business Creation in the Smart Agriculture Field The Next-generation Plant Farm Block FARM Begins Full-scale Production

Ryoden entered the business of developing equipment systems and providing construction engineering services for plant factories in 2017. We have since gone on to claim the largest share of the Japanese market for plant factory systems, equipment, and construction. Drawing on the resulting knowledge, we have set up the next-generation plant factory Block FARM in a joint venture with Farmship, Inc., which has expertise in the sale of plant factory vegetables and factory operation. Block FARM commenced full-scale production in August 2022 with the goal of mass-producing spinach in a sanitary factory environment. Plans call for year-round cultivation of 1,000 metric tons annually.



#### Block FARM

- Daily production: 3t
- Location: 2262-1 Nishinaka, Hara, Numazu City, Shizuoka, Japan
- Annual production: 1,000t
- Total site area: 20,000m<sup>2</sup> Gross floor space: 8,000m<sup>2</sup>
- Growing method: Enclosed and artificially lit

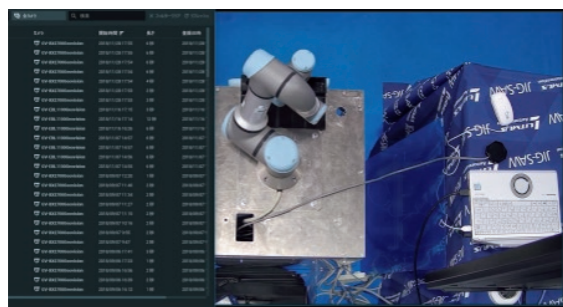


### ❖ Factory Automation Systems



Meeting all your production efficiency and other needs on the factory floor

Ryoden offers a full range of solutions for linking equipment and devices on the production floor via the Internet of Things. These help clients boost production efficiency and save labor. They also facilitate production control, preventive maintenance, and quality improvements. One of these solutions is the image monitoring system Flag Revolution (abbreviated "FlaRevo"). FlaRevo features a video management system (VMS) that not only performs the security functions of a traditional surveillance camera but also helps boost operational efficiency. Installing this system enables you to see exactly what is happening on any site. It lets you remotely monitor hazardous areas and special zones. It also allows monitoring of facilities so that malfunctions can quickly be detected and rectified.



FlaRevo enables you to see exactly what is happening on any site

### ❖ Cooling & Heating Systems



Meeting the needs of the day with solutions like semiconductor clean rooms

Ryoden offers industrial cooling and heating systems tailored to the client's needs. These include air conditioning systems for office buildings, as well as clean rooms and energy-saving support systems. In the area of clean rooms, we focus on constructing clean rooms for production of the next generation in semiconductors. Clean rooms are essential for the development and fabrication of cutting-edge semiconductors. But because the required specifications, level of performance, and layout differ from client to client, nearly all clean rooms need to be custom designed. This adds to delivery times and costs. To solve this problem, Ryoden has modularized clean room air-conditioning systems, thus shortening delivery times and cutting costs.



A low-cost semiconductor clean room with a shorter delivery time

### ❖ Building Systems



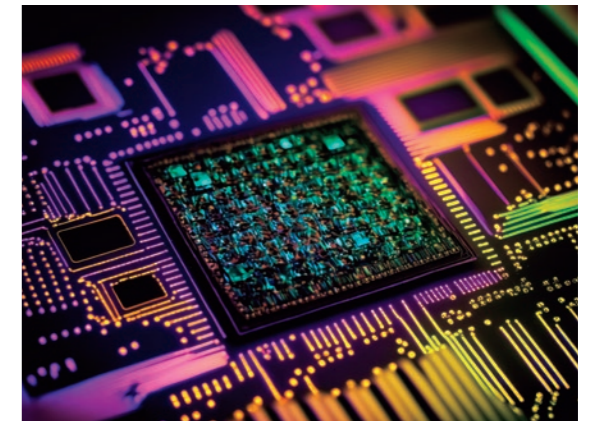
A wide range of solutions for creating a safe, comfortable office environment in the IoT era

The emergence of the information society has led to the need for total building solutions that create a safe, comfortable office environment while saving energy. Ryoden offers a full range of elevators, escalators, automated parking systems, and other such equipment. After all, we are the top dealer in elevator and escalator equipment made by Mitsubishi Electric, a leader in the field. In addition, we supply the latest systems for creating a safe, pleasant building environment in the IoT era. These range from solar power equipment to equipment management systems, security systems, and remote monitoring systems that operate 24 hours a day, 365 days a year. Our comprehensive supply network enables us to offer a total package of building solutions to meet the diverse needs of our clients.



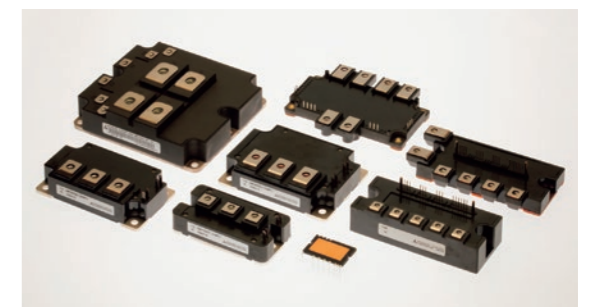
Demand for solar power facilities is increasing as society decarbonizes

### ❖ Electronics



Promptly supplying the optimum product in partnership with the world's leading chipmakers

Ryoden boasts a comprehensive lineup of semiconductors and devices sourced from the world's leading manufacturers, including Mitsubishi Electric. Drawing on our years of experience and expertise, we recommend the manufacturer and device best suited to the client's specifications, then promptly deliver it. Further, we propose and implement total solutions by forecasting technological trends in the electronics industry and chip set development trends among clients. Plus we have in place a sales organization and portfolio of technologies and products that enable us to address the client's exact requirements. Our network extends beyond Japan to cover the United States, East Asia, Southeast Asia, and Europe, so we can respond flexibly to a wide variety of needs.



SiC power devices made from silicon carbide (SiC): the next generation of power devices

❖ ICT



Providing a comprehensive ICT platform for your business

From hardware to network devices, we recommend the products and systems best suited to your company. These include video management systems, RFID solutions, security solutions, and servers, which we source from multiple vendors. We also supply RFID solutions tailored to your diverse needs, such as asset and inventory management systems. On-site footage shot by our proprietary video management system FlaRevo can be used for business applications. We supply the right combination of cutting-edge products and technologies for your requirements and business environment, ranging from PCs, servers, and network equipment to security devices. By building a secure, highly versatile ICT environment to support your business operations, we help you save labor and streamline operations.



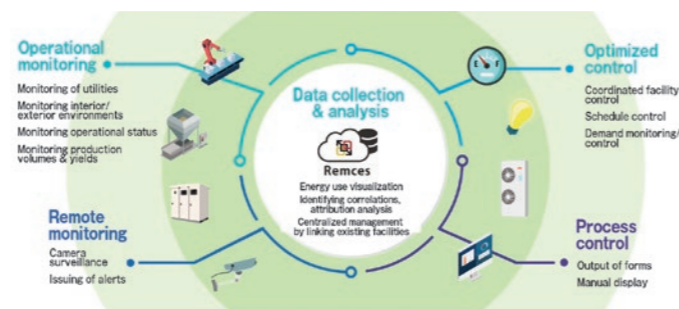
With its cutting-edge VMS, FlaRevo uses a network of cameras to support your business

❖ Green Networks



Remces helps solve problems by enabling data visualization, analysis, and control

Ryoden's proprietary integrated monitoring and control platform Remces helps clients solve problems and operate sustainably. Being an open-protocol system, it supports centralized monitoring and control of air conditioning and lighting made by different manufacturers. It allows for remote monitoring from home or on the road, capitalizing on the fact it is cloud-based. And the monitoring window can be viewed and used from any device or browser. It can be accessed via computer, tablet, or smartphone. Remces is so user-friendly that just by looking at the screen, anyone can tell what has happened and where, and what action to take in response. It also has a digital signage feature that provides visual markers to visitors and employees.



Remces, Ryoden's proprietary cloud-based integrated monitoring and control system, lets you collect and analyze all types of data and control various facilities.

❖ Smart Agriculture



Delivering total plant factory solutions that leverage our core competencies

Ryoden has designed and built numerous plant factories by marshaling our expertise in our core businesses of factory automation systems, cooling and heating systems, and electronics. Applying this experience, knowledge, and expertise, we are focusing on expanding the market and establishing the best growing techniques. We are also working on developing specialized products and systems designed to ensure compatibility between facilities. These efforts enable us to offer highly efficient next-generation plant factory systems. We also propose and implement comprehensive solutions for constructing plant factory facilities optimized to the client's requirements. To that end we leverage our many advantages. These include our dedicated organization specializing in construction of plant factories; the LED high-speed grow lights we have developed in house, which command the biggest market share in the industry; and our impressive procurement capabilities as the largest trading company in the Mitsubishi Electric network.



Example of a large-scale plant factory conceived and built by Ryoden

❖ Healthcare



A wide portfolio of solutions for hospitals, from image data management to operational support systems

Ryoden helps hospitals go digital while minimizing the initial cost. We offer them a full range of support, from designing and developing information systems to equipment sales, maintenance, and rental to providing cloud services. Indeed, we support frontline healthcare on all fronts. We offer an ecommerce website-based service that enables purchases to be made more efficiently. We also provide a hypodermic-needle collection bin, the Haripon, and a health management app for smartphone, MySOS for ME. In addition, Ryoden offers image data management and operational support systems designed to ensure that 3D and AI-based diagnostic imaging equipment can be used reliably. We also support preventive medicine and assist companies with workplace wellness programs.



The smartphone app MySOS for ME, which helps users stay healthy



# Management Philosophy and Guidelines for Action

Ryoden carries out business activities through management grounded in its Management Philosophy and the Ryoden Group Guidelines for Action, as described below.

## Management Philosophy

Outstanding companies never forget the principles on which they were founded, even in times of wrenching change, and continue to cultivate positive relationships with their employees and management and the broader community. Companies that overcome adversity and thrive in the face of it are those that continue to evolve along with the times.

Ryoden's Management Philosophy consists of the following three principles.

- We respond to societal changes, strive for the stability and development of our corporate management and contribute to the communities in which we do business.
- By conducting business sincerely and providing leading-edge technologies, we justify the trust of our customers.
- We respect the dignity and individuality of each employee, cultivating people with high degrees of professional skill, commitment to innovation and creativity.

With these three principles as our spiritual support, we are striving to be a Company that can prevail in each era.

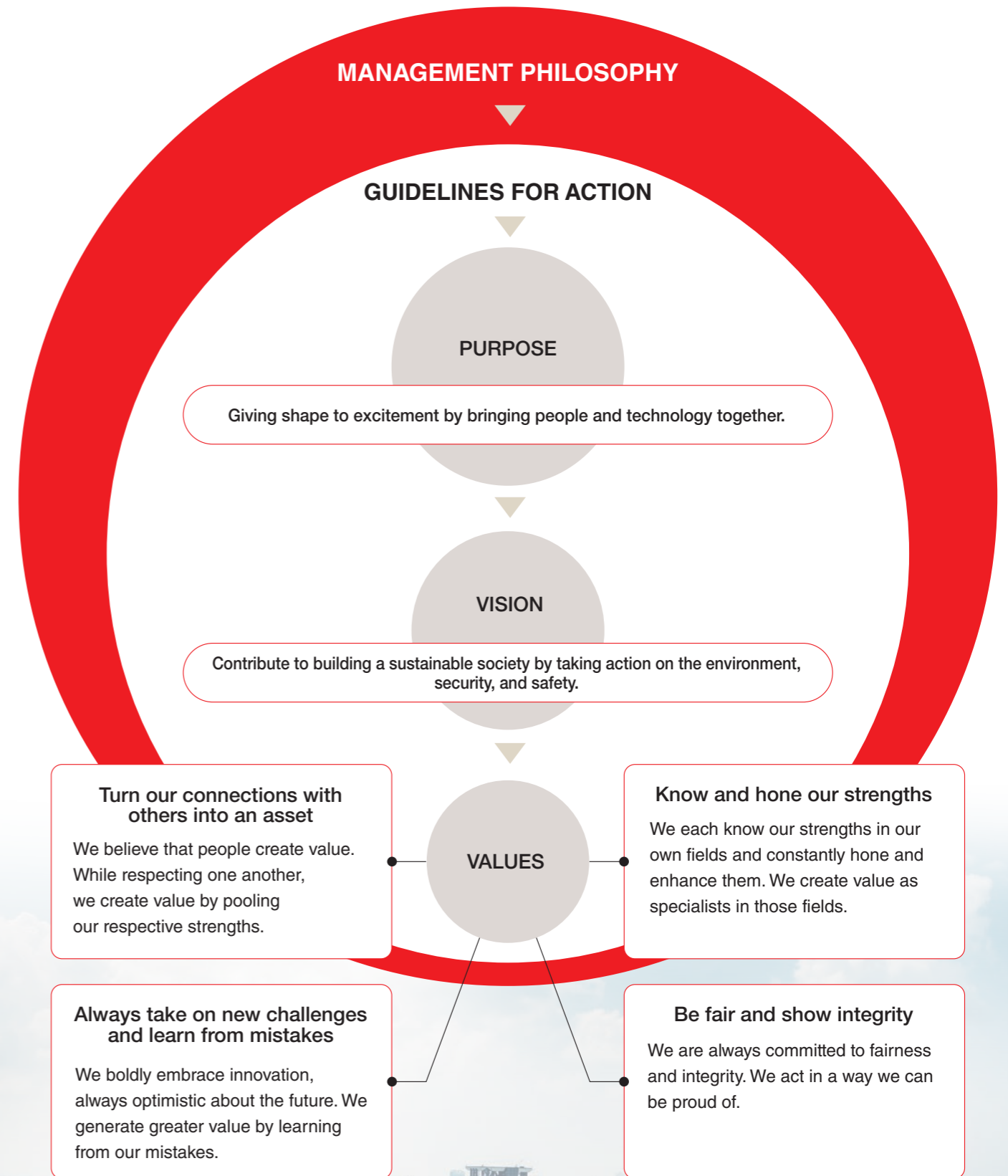
## Guidelines for Action

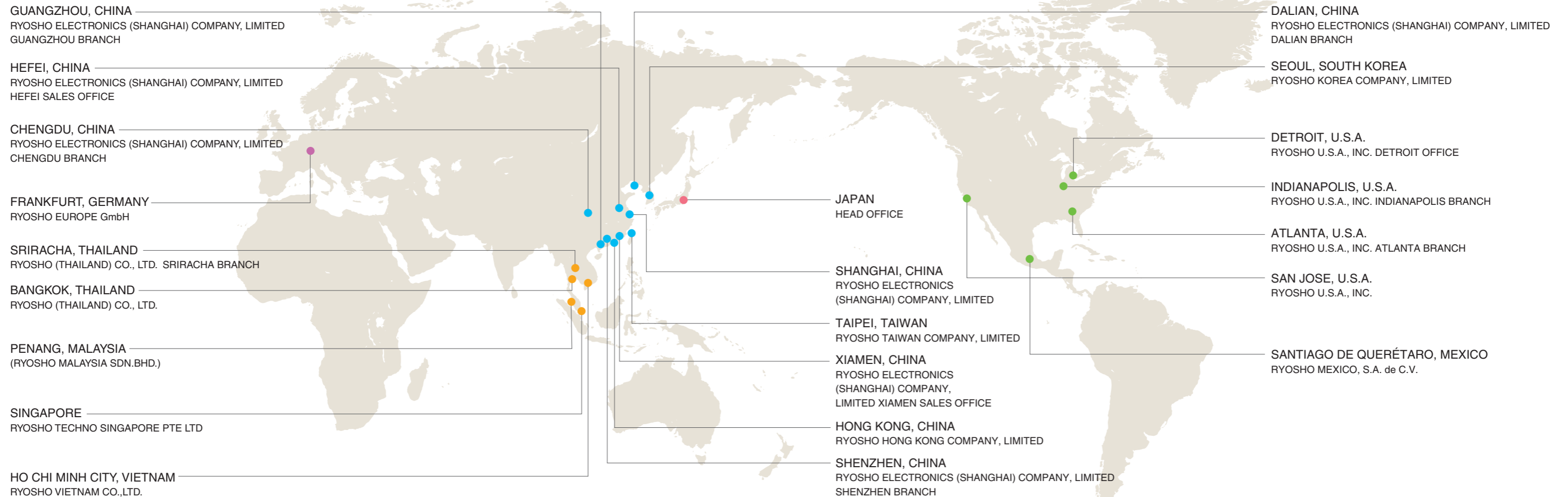
The Ryoden Group Guidelines for Action express the Management Philosophy in more specific terms, so that all managers and employees can use them as a guide in their daily actions as they carry out the business activities of the Group. The Guidelines for Action are also reflected in the management and internal systems of each Group company.

We use the Guidelines for Action to furnish appropriate criteria for judgement and clarify our stance as a Group that strictly abides by ethical norms, laws and rules. At the same time, we govern our daily actions by the Guidelines for Action, so that we can find common values as a corporate Group, renew the spiritual features and culture of the Group, and develop further as a corporate brand that is trusted more than ever by the communities it serves.

1. We strictly comply with laws and regulations.
2. We aim for profitable growth.
3. Ryoden fulfills its responsibilities to society as a global enterprise.
4. Ryoden establishes its own approach, by which it builds a dynamic organization. We pursue self-enlightenment, with respect for people's dignity and individuality and a high sense of purpose.
5. Our managers and directors take the initiative in fulfilling their roles.

## Ryoden's Purpose, Vision, and Values





※As of Sep. 2023

## Overseas Network

### Southeast Asia

- SINGAPORE**  
● RYOSHO TECHNO SINGAPORE PTE LTD  
12 WOODLANDS SQUARE 11-74 WOODS SQUARE SINGAPORE 737715  
TEL: +65-6473-7118 FAX: +65-6479-8286
- THAILAND**  
● RYOSHO (THAILAND) CO., LTD.  
Unit 1507 Empire Tower 15th Floor, 1 South Sathorn Road Yannawa, Sathorn, Bangkok 10120 Thailand  
TEL: +66-2-670-0385 FAX: +66-2-670-0389
- RYOSHO (THAILAND) CO., LTD. SRIRACHA BRANCH  
Success Building, 4th Floor, 143/17-18 Sukhumvit Road Sriracha Chonburi, 20110, Thailand  
TEL: +66-38-323470 FAX: +66-38-323471
- VIETNAM**  
● RYOSHO VIETNAM CO.,LTD.  
5 Floor, LINCO GROUP Building, 61A-63A Vo Van Tan St., Ward Vo Thi Sau, District 3, Ho Chi Minh City, Vietnam  
TEL: +84-28-3636-0430
- MALAYSIA**  
● RYOSHO MALAYSIA SDN. BHD.  
E-GATE, 1-05-29, Lebu Tunku Kudin 2, 11700 Gelugor, Penang, Malaysia  
TEL: +604-372-1988

### East Asia

- HONG KONG**  
● RYOSHO HONG KONG COMPANY, LIMITED  
Unit Nos. 01-03, Level 30, Tower1, Millennium City 1, No.388 Kwun Tong Road, Kwun Tong, Kowloon, Hong Kong  
TEL: +852-2861-0111 FAX: +852-2861-3960
- CHINA**  
● RYOSHO ELECTRONICS (SHANGHAI) COMPANY, LIMITED  
12F Mitsubishi Electric Automation Center 1386 Hong Qiao Rd, Changning, Shanghai, 200336, China  
TEL: +86-21-6119-9066 FAX: +86-21-3135-2305
- RYOSHO ELECTRONICS (SHANGHAI) COMPANY, LIMITED DALIAN BRANCH  
Rm 2602, Tian An International Building, No.88, Zhong Shan Road, Zhong Shan District, Dalian, 116001, China  
TEL: +86-411-8230-4156 FAX: +86-411-8230-4153
- RYOSHO ELECTRONICS (SHANGHAI) COMPANY, LIMITED GUANGZHOU BRANCH  
Rm2606, Nuode Center, NO477 Hanxi Avenue East, Panyu District, Guangzhou, 511442 Chaina  
TEL: +86-20-8923-6872 FAX: +86-20-8923-6952
- RYOSHO ELECTRONICS (SHANGHAI) COMPANY, LIMITED CHENGDU BRANCH  
Room 1709 Tower 1 East Hope Tianxiang Square No.530 Tianfu Avenue, Gaoxin District, Chengdu, 610041, China  
TEL: +86-28-6633-0166 FAX: +86-28-6633-0617

- RYOSHO ELECTRONICS (SHANGHAI) COMPANY, LIMITED SHENZHEN BRANCH  
Rm 1508, Shun Hing Square, Di Wang Commercial Centre, 5002 Shennan East Road, Shenzhen, 518008, China  
TEL: +86-755-8246-5800 FAX: +86-755-8246-5700
- RYOSHO ELECTRONICS (SHANGHAI) COMPANY, LIMITED HEFEI SALES OFFICE  
Room 1404 Building A Huabang ICC No.190 Qianshan Road, Zhengwu District, Hefei, 230031, China  
TEL: +86-21-6119-9066 FAX: +86-21-3135-2305
- RYOSHO ELECTRONICS (SHANGHAI) COMPANY, LIMITED XIAMEN SALES OFFICE  
2210-2, 474 Xinglin Bay Business Operation Center, Jimei District, Xiamen, Fujian, 361022, China  
TEL: +86-20-8923-6872 FAX: +86-20-8923-6952
- TAIWAN**  
● RYOSHO TAIWAN COMPANY, LIMITED  
13F-1, No.207, Dunhua N. Rd., Songshan Dist., Taipei City 10595, Taiwan (R.O.C.)  
TEL: +886-2-2546-5006 FAX: +886-2-2546-5069
- KOREA**  
● RYOSHO KOREA COMPANY, LIMITED  
(Magok-dong, Doosan The Land Park) C-718,719, 161-8, Magokjungang-ro, Gangseo-gu, Seoul, 07788, Korea  
TEL: +82-2-2649-0228 FAX: +82-2-2649-0229

### North America

- United States**  
● RYOSHO U.S.A., INC.  
2580 N.First Street, Suite 230, San Jose, CA 95131 U.S.A.  
TEL: +1-408-474-7777 FAX: +1-408-474-7722
- RYOSHO U.S.A., INC. ATLANTA BRANCH  
3555 Koger Boulevard, Suite 320, Duluth, GA 30096 U.S.A.  
TEL: +1-770-242-0606 FAX: +1-770-242-0372
- RYOSHO U.S.A., INC. INDIANAPOLIS BRANCH  
8777 Purdue Road, Suite 336, Indianapolis, IN 46268 U.S.A.  
TEL: +1-765-808-7979
- RYOSHO U.S.A., INC. DETROIT OFFICE  
28175 Haggerty Road, Suite 128, Novi, MI 48377 U.S.A.  
TEL: +1-248-994-2236 FAX: +1-248-994-2237
- MEXICO**  
● RYOSHO MEXICO, S.A. de C.V.  
Anillo Vial II Junipero Serra 2601 Interior 602, Residencial Juriquilla Santa Fe, Queretaro, Queretaro, Mexico, C.P.76230  
TEL: +52-442-325-4545

### Europe

- GERMANY**  
● RYOSHO EUROPE GmbH  
Voltastrasse 1, 60486 Frankfurt am Main, Germany  
TEL: +49-69-7958390-0 FAX: +49-69-7958390-29



# Our Growth Trajectory

## How a Mitsubishi Electric agent became a global firm with ¥200 billion in sales

Ryoden Corporation was established in 1947, soon after the end of the World War II. We initially handled such products as sewing machines, refrigerators, and radios as a sales agent for Mitsubishi Electric. We then grew steadily, until in the 1970s we expanded into semiconductors, elevators and escalators, and residential equipment. Thus began the diversification of our business as a technical trading company.

The globalization of our business gathered pace in the 1990s. Consolidated net sales topped ¥200 billion in 1995, and by 2004, overseas sales had come to account for more than 10% of total sales.

The years since 2000 have marked our rebirth as a company. We have embarked on further corporate reforms with the goal of achieving a century in business. On our 70th anniversary in 2017, we launched a full-scale effort to move into solutions. Today, our operations revolve around four core businesses underpinning six types of solutions. Always eager to take on new challenges, we have also expanded into healthcare and smart agriculture.

In 2023, we adopted a new name in Japanese: **Kabushiki Kaisha Ryoden** (though in English we are still Ryoden Corporation). This change embodies our commitment to delivering new value to all our stakeholders as a business creation company that transcends the traditional bounds of an agency or trading company. It also symbolizes our determination to reinvent ourselves as a company that contributes to the sustainable development of the global community.

### ●1947

Riko Shokai K.K. was established as an agent for Mitsubishi Electric Corporation. It sold electrical equipment—mainly sewing machines, refrigerators, and radios—as well as other equipment.

### ●1958

**Name changes to Ryoden Shoji K.K.**

Riko Shokai, the predecessor of Ryoden Corporation, was established in Tokyo in 1947, soon after the end of the World War II. It later merged with Osaka-based Daiko Shokai. In 1958, the company changed its name Ryoden Shoji (Ryoden Trading).



### ●1963

**Listed on the Second Section of the Tokyo Stock Exchange**

### ●1964

Agent for Mitsubishi Electric products



### ●1971

Authorized dealer for Mitsubishi Electric elevators and escalators

### ●1973

Authorized dealer for Mitsubishi Electric semiconductors

### ●1979

Authorized dealer for Mitsubishi Electric residential equipment

▶ Net sales, by year



### Formative Period

Established as a sales agent

### Diversifying Business

First steps as a technical trading company

### Going Global

Pursuing a profitable growth strategy

### Rebirth of the Company

Boldly reinventing ourselves in the quest to reach a century in business



### Strengths Ryoden has developed over the years





**RYODEN**

<https://www.ryoden.co.jp>